

The AHTD

CENTERLINE

Volume 5, Number 10 • October 17, 1996

Group Health Insurance Meetings Scheduled

A series of informational meetings is being conducted to explain provisions of the current insurance options as well as new options available. Employees are encouraged to attend one of these meetings. All employees *must* complete an application even if they elect to continue participating in their current plan.

Insurance Meeting Schedule

District 1/Wynne and AHP District 5

October 31, 1996 • 9 a.m. and 1 p.m.

Wynne National Guard Armory
305 E. Helen

District 7/Camden and AHP District 4

November 4, 1996 • 9 a.m. and 1:30 p.m.

Garrison Auditorium
Clifton & Cleveland Avenues

District 2/Pine Bluff and AHP District 1

October 25, 1996

8 a.m. - District 2 Headquarters
1 p.m. - U of A at Monticello/Fine Arts Bldg.

District 8/Russellville and AHP District 2

October 23, 1996 • 8:30 a.m. and 1 p.m.

District 8 Headquarters

District 3/Hope and AHP District 4

November 1, 1996 • 9:30 a.m. and 1:30 p.m.

Hope Community Center, Fair Park

District 9/Harrison and AHP District 3

October 21, 1996

9 a.m. - District 9 Headquarters
2 p.m. - Carroll County Electric Coop.
Bentonville

District 4/Fort Smith and AHP District 3

October 22, 1996 • 9 a.m. and 1 p.m.

Fort Smith National Guard Armory
Municipal Airport Blvd.

District 10/Paragould and AHP District 5

October 29, 1996 • 9:30 a.m. and 1 p.m.

Paragould Community Center
121 N. 12th St.

District 5/Batesville and AHP District 2

October 30, 1996 • 8:30 a.m. and 1 p.m.

District 5 Headquarters

Central Office/Little Rock and AHP District 1

October 15, 1996 • 9 a.m. and 1 p.m.

October 24, 1996 • 9 a.m. and 1 p.m.

October 28, 1996 • 10 a.m.

AHTD Central Office Auditorium

District 6/Little Rock and AHP District 1

October 16, 1996 • 9 a.m. and 1:30 p.m.

AHTD Central Office Auditorium

1996 Equipment Operators' Roadeo

Good food, good friends and friendly competition is how participants in the Department's Annual Statewide Equipment Operators' Roadeo described their day-long test of skill.

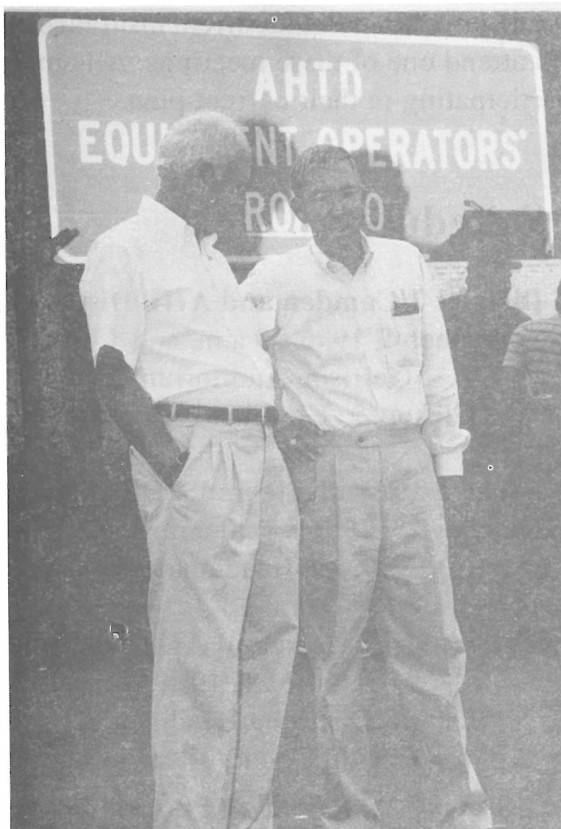
Over 70 Department employees showed off their expertise in six different categories in the annual event held on Wednesday, September 25 at the Central Shops. Equipment operators from around the state competed in the Tractor/Lowboy, Tandem Axle Dump Truck, Single Axle Dump Truck, Tractor/Mower, Backhoe and Motor Patrol events.

Cool, overcast skies in the morning led to sunshine by the end of the day and the competition heated up with the change in the weather.

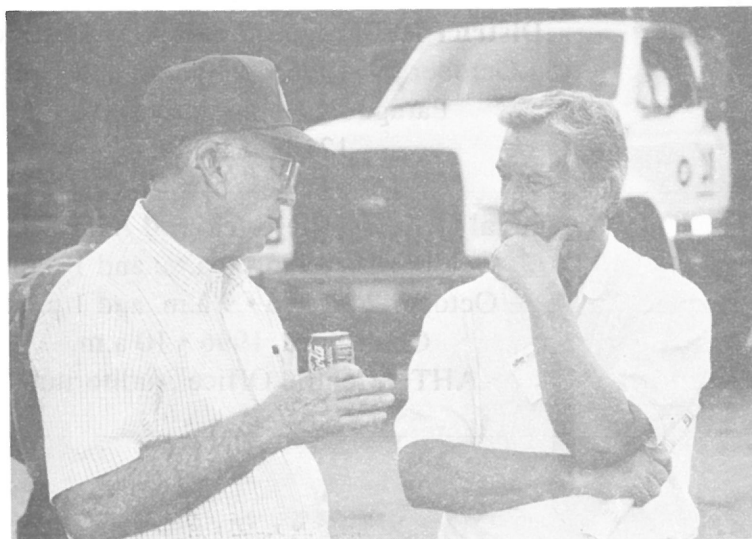
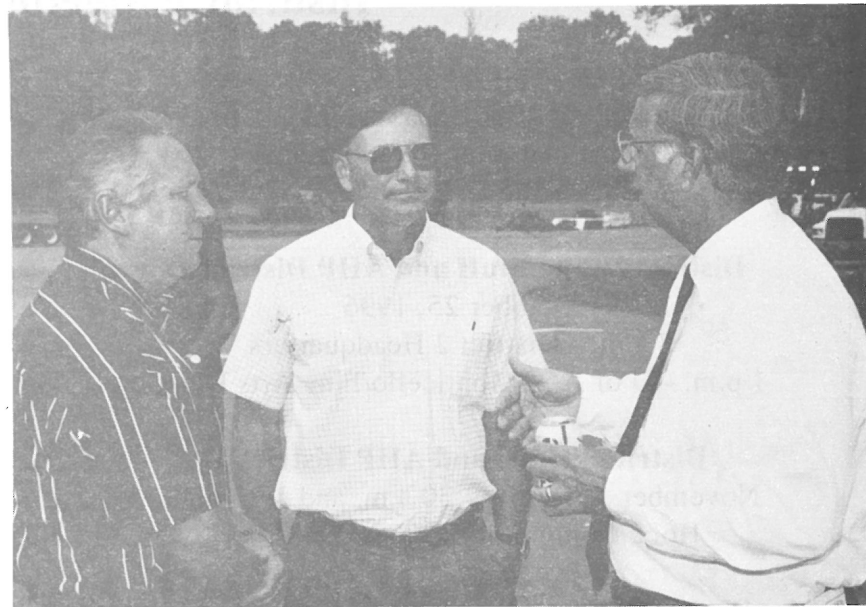
Kevin Evans, from the Department's Central Office/Materials, was making his first appearance at the Roadeo in the Single Axle competition and not even a walking cast on his ankle could keep him out of his event. "I think its pretty cool. It's a chance for everyone to get together from around the state and meet each other. I've only worked here since February and I really enjoy getting to meet other Department employees that do the same thing that I do," Evans said. Kevin did a little more than just socialize as he placed third in his event.

Commission Vice Chairman Bobby Hopper and Director Dan Flowers presented certificates to the first, second and third place finishers in each category. Team Champion for this year's event was District 6. Commissioners Herby Branscum, Jr. and John "M" Lipton were also on hand to show their support for the competitors. A barbecue lunch served by top Department officials was part of the reward for the competitors.

Although fun is one of the main themes of the Roadeo, the major emphasis placed on the competition is the demonstration of skills, concentration and safety.



(Top left) State Maintenance Engineer and Commission Vice Chairman Bobby Hopper. (Top right) District 6 Engineer Leonard Hall, Maintenance Engineer Brian Wright, and Director Dan Flowers. (Bottom left) District 7 Engineer Coy Campbell and Commissioner John "M" Lipton. (Bottom right) District 8 Engineer Lawrence Fletcher, Commissioner Herby Branscum, Jr., and Van Buren County Area Maintenance Supervisor Smitty Bonds.





1996 TEAM CHAMPIONS - DISTRICT 6

Commission Vice Chairman Bobby Hopper (far left) and AHTD Director Dan Flowers (far right) with the 1996 Team Champions. They are left to right: Lee Collins, Stan Wagner, David Wilson, David Atherton, Danny Posey, James Medlin, and District Engineer Leonard Hall.



1996 STATE CHAMPIONS

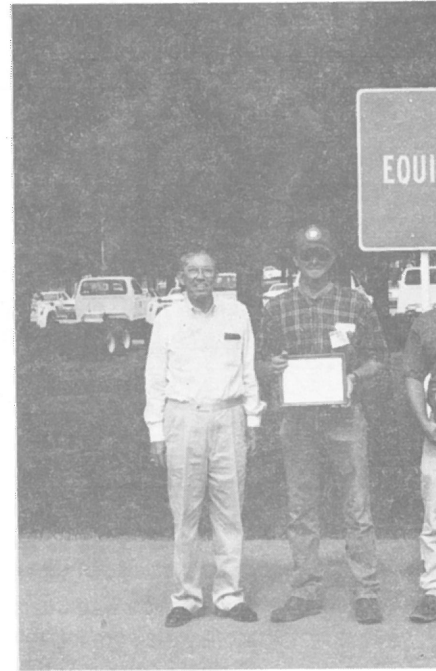
(L-R) Commissioner Hopper; Donie Bray, Tractor/Lowboy; Ernest Rose, Tractor/Mower; Kenny Riley, Backhoe; Howard Farmer, Motor Patrol; Joe Showl, Tandem Axle Dump Truck; Margaret Byers, Single Axle Dump Truck; AHTD Director Dan Flowers

1996 AHTD Equipment Statewide Rodeo



TRACTOR TRUCK/LOWBOY

(L-R): Commission Vice Chairman Bobby Hopper; 3rd Place: Stan Wagner - District 6; 2nd Place: Harold Mullins, Jr., - District 1; 1st Place: Donie Bray - District 5; AHTD Director Dan Flowers



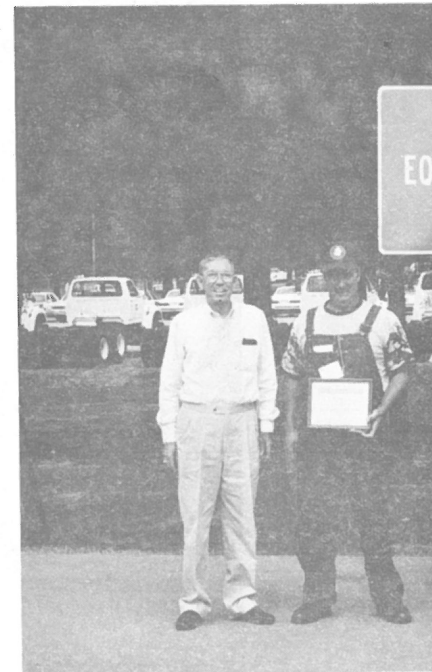
TANDEM

(L-R): Commissioner Hopper; 3rd Place District 6; 1st Place: Joe Showl - District



TRACTOR /MOWER

(L-R): Commissioner Hopper; 3rd Place: Johnny O'Neal - District 7; 2nd Place: Johnny Hayes - District 8; 1st Place: Ernest Rose - District 1; Director Flowers



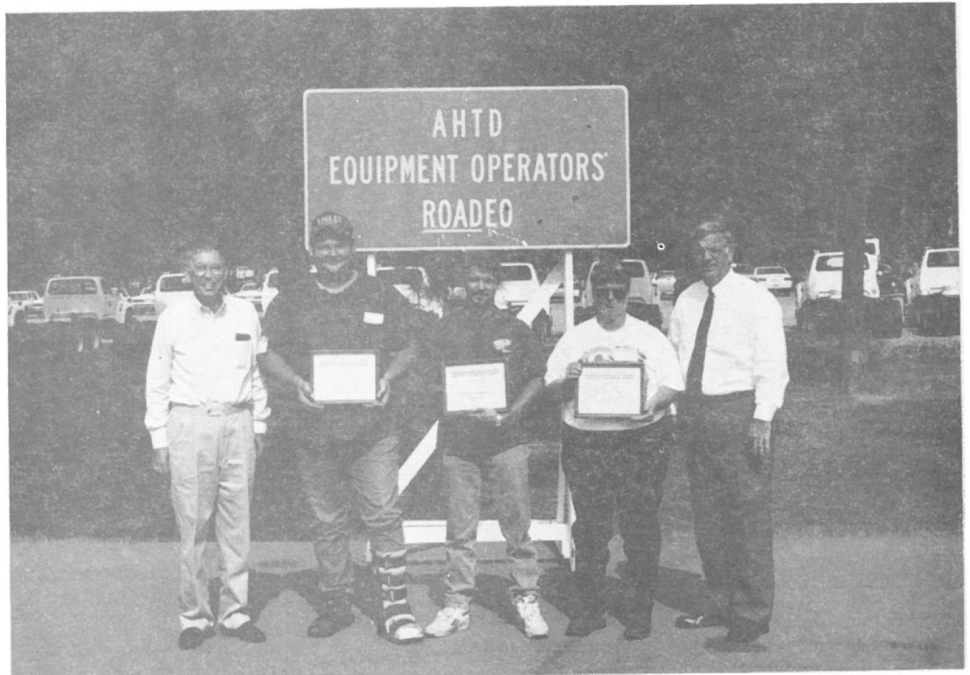
(L-R): Commissioner Hopper; 3rd Place Langston - District 8; 1st Place: Kenny F

Equipment Operators' Roadshow Winners



DUMP TRUCK

1st Place: Tony Prescott - District 7; 2nd Place: Lee Collins - District 10; Director Flowers



SINGLE AXLE DUMP TRUCK

(L-R): Commissioner Hopper; 3rd Place: Kevin Evans - Materials; 2nd Place: David Atherton - District 6; 1st Place: Margaret Byers - District 4; Director Flowers



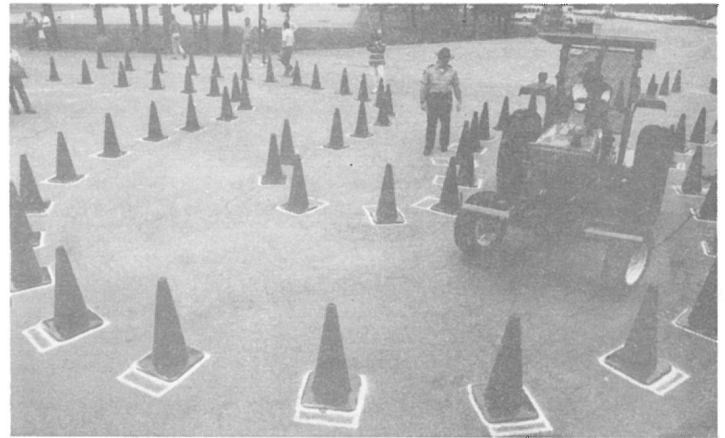
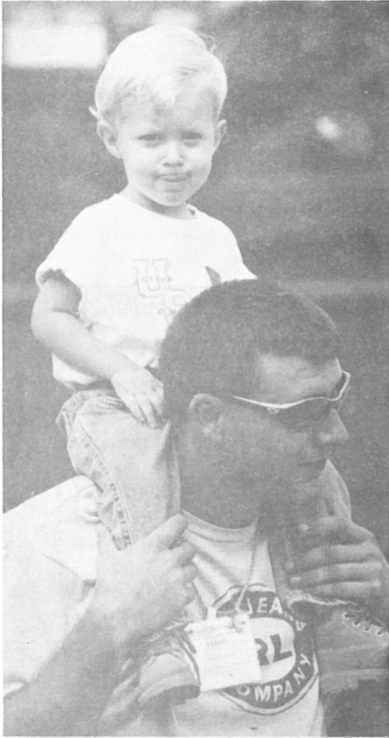
W/SHOE

1st Place: Tony Prescott - District 7; 2nd Place: Dennis - District 9; Director Flowers

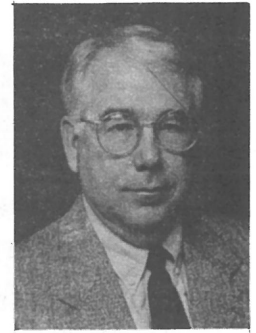


MOTOR PATROL

(L-R): Commissioner Hopper; 3rd Place: Euclid Elliott - District 7; 2nd Place: Danny Posey - District 6; 1st Place: Howard Farmer - District 9; Director Flowers



Jim Gaither Promoted To Right of Way Division Head



Jim Gaither, Assistant Division Head of the Right of Way Division was promoted to Division Head of Right Way effective October 10, 1996. He graduated from Ouachita Baptist University with a bachelor's degree in biology.

He began his employment with the Department in 1972 as a Right of Way Technician. In 1973 he transferred to the Environmental Division where he served in various positions and was promoted to Assistant Division Head of Environmental in 1980. He served in that capacity until 1991 when he transferred back to the Right of Way Division as Assistant Division Head.

Gaither, a native of Morrilton, currently resides in Saline County with his wife, Becky. They have twin sons and a daughter.

Roadway Design Announces Promotions



Booher, Green and Cruce

Brooks Booher, Hydrologic Engineer, has been promoted to Staff Hydraulic Engineer for the Hydraulic Section of the Roadway Design Division. He began his career in the Construction Division at the Texarkana Residency. He later transferred to the Hydraulics Section where he has served in various positions attaining the position of Hydrologic Engineer.

Martin Cruce, Senior Design Engineer, has been promoted to Staff Design Engineer for the General Design Section. He began his career with the Department in 1980 in the Roadway Design Division. He has served in various positions in the division, attaining the position of Senior Design Engineer in the Freeway Design Section.

Bob Green, Senior Design Engineer, has been promoted to Staff Design Engineer for the Primary Design Section. He began his career in the Construction Division and later transferred to Roadway Design where he has served in various positions.

All are civil engineer graduates of the University of Arkansas at Fayetteville and registered professional engineers.

The AHTD CENTERLINE

Published by and for employees of the Arkansas State Highway and Transportation Department as a medium of departmental news and other information. Correspondence and materials should be directed to the Public Affairs Office, 10324 Interstate 30, Room 1002, P.O. Box 2261, Little Rock, Arkansas 72203-2261, (501) 569-2227.

ARKANSAS STATE HIGHWAY COMMISSION

L.W. "BILL" CLARK, CHAIRMAN
BOBBY HOPPER, VICE CHAIRMAN
HERBY BRANSCUM, JR.
JOHN "M" LIPTON
J.W. "BUDDY" BENAFIELD

DAN FLOWERS
DIRECTOR OF
HIGHWAYS AND TRANSPORTATION

© 1996 - AHTD

DAYLIGHT SAVING TIME ENDS
2 a.m. Sunday, October 27
FALL BACK ONE HOUR



Veterans' Day Holiday

Monday, November 11 is a state holiday for AHTD employees in observance of Veterans' Day.

All work will be suspended except in cases of emergency.

AHTD PEOPLE



SEPTEMBER 1996

NEW EMPLOYEES

Environmental

William Bailey, Beautification Coordinator I

Maintenance

Randy Estes, Ronald Schaal, Stripper Helpers; **Travis Evans, Sammy Reynolds, Billy Shands**, General Laborers

Planning & Research

Thomas Starnes, Jr., Transportation Planner

Right of Way

Janet Eskew, Adv. CADD Technician; **Billy Taylor, Jeffrey Wroten**, Administrative Assistants II

District 1

Brenda Evans, General Laborer; **Leester Wilson, Charles Wallace, Clyde Parrish, James Poindexter**, Single Axle Truck Drivers

District 2

David Peyton, Mark Manfouz, Single Axle Truck Drivers

District 3

William White, Larry Hovarter, Stacy Wicker, General Laborers; **Chris Potter**, Const. Helper I

District 4

Chris Titsworth, Travis Evans, Angela Crossland, General Laborers; **Fred Schulterman**, Single Axle Truck Dr.; **Stephen Baumeister, Catherine Cheatham**, Sign Erectors; **Jamin Hess**, Constr. Helper I

District 5

Bobby Younger, General Laborer

District 6

Michael Sibley, Single Axle Truck Driver; **Brandon Harrison, Brian Singleton, Leon Thompson, Jr.**, General Laborers

District 7

Dennis Evans, Angelo Robinson, Single Axle Truck Drivers

District 8

Glen Chavers, General Laborer; **William Alvey**, Single Axle Truck Driver

District 9

Carl True, Joe Truojolo, Single Axle Truck Drivers; **Misty Bell**, General Laborer

District 10

Sandra Dicus, Kendal Hayes, Ricky Richardson, General Laborers

PROMOTIONS

Human Resources

Laura Munnerlyn, Single Axle Truck Driver

Maintenance

Othy Small, Jr., Heavy Bridge Repairer I; **Kevin Buck, James Hall, Jeremy Matheny**, Paint Transport Truck Drivers; **Thomas Duncan**, Striping Machine Driver; **Maria Farris**, Traffic Clerk; **Clyde McCollum**, Crew Leader; **Ronald Porter, Rickey Ring**, Sign Erectors

Materials

Cathy Mitchell, Materials Technician III

Programs & Contracts

Felicia Burton, Accountant II

Right of Way

James Gaither, Division Head

Roadway Design

Brooks Booher, Staff Hydraulic Engineer; **Martin Cruce, Robert Green, Jr.**, Staff Design Engineers

Surveys

Scott Evans, Surveys Helper

District 2

Ronnie Clark, Single Axle Truck Driver; **Martin Geissler**, Lowboy or Float Truck Driver; **Larry Johnson**, Rest Area Attendant

District 3

Gregory Allen, Single Axle Truck Driver

District 4

Leslie Barnett, Inspector; **Charles Dickerson, Michael Pickens, Shannen Ray, Joseph Uselton**, Lead Persons; **Charles Lance**, Const. Project Supv.; **Leroy Oliver**, Mechanic; **Jamie Oxford**, Single Axle Truck Driver; **Russell Payne**, Multi-Axle Truck Driver; **Laura Scantlin**, Vegetation Controller; **Samuel Young**, Distributor/Roller Operator

District 5

Jonathan Brown, Single Axle Truck Driver; **Michael Pankey**, District Office Manager

District 6

Nellie Erwin, Crew Leader; **William Marlow**, District Bridge Inspector

District 7

Cameron Forbush, Multi-Axle Truck Driver; **Michael Forrest, Christopher Stanchfield**, Single Axle Truck Drivers; **Travis Greer, Jr.**, Hydraulic Excavator Opr./Finish; **Jerry Smith**, Distributor/Roller Opr.; **Christopher, Stanfield**, Const. Aide II

District 8

Walter Edwards, Brian Johnson, Single Axle Truck Drivers

District 9

Tommy Earwood, Distributor Operator

District 10

Robert Bynum, Lowboy or Float Truck Dr.; **James Gray, Anthony James**, Backhoe/Front End Loader Operators; **Travis Lung**, Distributor/Roller Opr.

SERVICE

40 Years

Don Potter, Roadway Design Staff Hydraulic Engineer; **Jimmy Wynn**, D-7 Const. Project Supervisor

30 Years

Dairl Hyde, D-10 Maint. Job Superintendent

25 Years

Farrell Adams, Surveys Section Head; **Dennis Farmer**, Survey Specialist; **James Todd**, D-4 Sign Erector; **David Becker**, D-4 Maint. Supt.; **Alan**

Carmack, D-6 Area Maint. Supv.; **Eileen Taylor**, D-6 Office Admin. Asst. V; **James Alexander**, D-7 Crew Leader; **Joe Davidson**, D-9 Equip. Maint. Supv.; **Calvin Douglas**, D-10 Sr. Body Repairer and Painter

20 Years

Reba Pettus, Bridge Structures Inv. Tech.; **Gary Martin**, Fiscal Services Sr. Accountant; **Annette Stanton**, Roadway Design Admin. Asst. I; **James Ramsey, Jr.**, D-1 Area Hdqts. Attendant; **Billy Carter**, D-2 Crew Leader; **Albert Dismuke**, D-3 Lowboy or Float Truck Dr.; **James Goff**, D-4 Sr. Inspector; **Thomas Caudel, Jr.**, D-5 Area Hdqts. Att.; **Joey Hipp**, D-5 Area Hdqts. Attendant; **Earl Ezell**, D-5 Area Hdqts. Attendant; **Jo Earnheart**, D-5 Personnel Clerk; **Danny Dennie**, D-6 Inspector; **Arland Carlton, Jr.**, D-9 Asphalt Tank Truck Dr.; **Eugene Martin**, D-9 Resident Engineer; **Donald Kingston**, D-10 Multi-Axle Truck Dr.

15 Years

Reggie Chitwood, AHP Sergeant; **Merle Campbell**, D-5 Dist./Roller Opr.; **Tommy Fife**, D-7 Station Attendant Supv.; **Bruce Pepper**, D-7 Lead Person

10 Years

Ross Batson, AHP Corporal; **Debra Smith**, Bridge Structures Inv. Tech.; **Louis Dillard**, Maint. Telecommunications Opr.; **Shirley Holmes**, ROW Sr. Abstractor; **L.C. White**, D-1 Multi-Axle Truck Dr.; **Robert Cardin**, D-2 Backhoe/Front End Loader Opr.; **Jeffery Rose**, D-3 Multi-Axle Truck Dr.; **Tommy Howard**, D-3 Crew Leader; **James Cross**, D-3 Motor Patrol Opr./Finish; **Stephanie Pinion**, D-4 Const. Aide I; **Kendall Stroud**, D-5 Const. Aide II; **Deborah Dyer**, D-6 Personnel Clerk; **John Madden**, D-6 Rest Area Attendant; **Junior Villines**, D-9 Motor Patrol Opr./Finish; **Keith Jones**, D-9 Multi-Axle Truck Dr.

5 Years

Lynanne Taylor, Human Resources Personnel Clerk; **Richard Mills**, P&R Study Engineer; **Stanley Bennett**, D-1 Sign Erector; **Charles Bradley**, D-3 Multi-Axle Truck Dr.; **Brenda Cullum**, D-4 Vegetation Controller; **Stephen Bolin**, D-5 Bridge Repairer I; **Joshua Green**, D-5 Const. Helper II; **David Cordin**, D-6 Const. Helper II; **Paul Howard**, D-7 Const. Aide I; **Ricky Billingsley**, D-9 Const. Aide I

RETIREMENTS

Bobby Joe Parker, Right of Way Division Head, retired September 30 with 35+ years service.

Henry Ward, District 6 Construction Project Supervisor, retired September 2 with 30+ years service.

J.T. Kingston, District 10 Bridge Job Superintendent, retired September 23 with 30+ years service.

Leonard Retherford, District 10 Crane Operator/Finish, retired September 23 with 20+ years service.

Moses Mullins, District 10 Backhoe/Front End Loader Operator, retired September 10 with 9+ years service.

Service Recognition Payments

The Arkansas State Highway Commission has authorized the Career Service Recognition payments for 1996, according to Department Director Dan Flowers.

“Act 566 of 1991 authorizes the payment to all state employees with ten (10) or more years of service,” Flowers said. All eligible Department employees will receive the lump-sum payment with their paychecks on November 27. The Service Recognition payment will be a separate check and will not be deposited into bank accounts of employees who utilize direct deposit.

All Social Security, Federal and State income taxes will be withheld from the payment. The amount received will not be counted as income for purposes of figuring retirement benefits; therefore, retirement deductions will not be withheld.

This payment is based on total years of state service as of December 31, 1996. The amount of payment follows:

10 through 14 years	-	\$300
15 through 19 years	-	\$400
20 through 24 years	-	\$500
25 years and over	-	\$600

Health Insurance Enrollment

An open enrollment period for health insurance is now in progress through November 26, 1996. Coverage for the plan you select will begin January 1, 1997. *All AHTD employees* who elect to carry health insurance **must complete** an application form and return it to the Insurance Office, Room 201, by November 26, 1996. Applications are currently being mailed by the Arkansas Department of Finance and Administration Insurance Office. If you do not receive an application in the mail, or are not currently insured through the State and would like to enroll, contact the AHTD Insurance Office, 569-2420.



Bi-Weekly Health and Life Contributions for Active Employees Under 70 (Without Basic Life)

		EMPLOYEE ONLY	EMPLOYEE & SPOUSE	EMPLOYEE & CHILDREN	EMP., SPOUSE & CHILDREN
PLAN I	Blue Cross/Blue Shield	\$38.57	\$109.54	\$68.88	\$120.10
PLAN II	Prudential HealthCare	\$22.58	\$77.57	\$44.74	\$79.02
PLAN III	United HealthCare	\$14.70	\$61.81	\$32.85	\$58.78
PLAN IV	QualChoice	\$25.93	\$84.26	\$49.79	\$87.62
PLAN V	HMO Arkansas	\$16.96	\$66.33	\$36.26	\$64.58

Basic Life Insurance (\$5,000) at \$1.29 per pay period not included in above premiums.

Cafeteria Plan Enrollment

The Department will distribute next week enrollment forms for participation in the 1997 Cafeteria Plan. The completed forms should be returned to the Fiscal Services Division by December 6, 1996.

For employees not familiar with the plan, each employee is allowed to tailor eligible benefits to their specific needs. The plan allows employees to take advantage of current tax laws which permit payment of certain expenses with pre-tax dollars. Among the options employees may select are insurance premiums, medical expenses and dependent care items. By enrolling in this plan, FICA (Social Security), Federal and State income tax deductions are reduced because "gross" pay is reduced by the amount withheld. However gross pay is not reduced for purposes of figuring retirement system deductions or benefits.

The Cafeteria Plan is voluntary. Employees are under no obligation to participate. If you choose not to participate, your present benefits and health coverage will not be jeopardized. Any questions regarding the Cafeteria Plan should be directed to the Fiscal Services Division at 569-2411.

Inclement Weather Policy

In the event Department employees are excused by official action due to inclement weather, no leave will be required. Official media notice to state agencies will apply to AHTD employees except designated essential personnel.

The Inclement Weather Policy excuses employees from work until 10:00 a.m. unless specified by official media notice. Employees who report to work after the excused time will be charged leave calculated between the excused time and their arrival time. Employees who do not report to work at all will be charged leave calculated between the excused time and the employee's normal ending work schedule.

Sick leave or annual leave may be utilized for inclement weather. Leave without pay will be utilized for employees who are temporary, part-time, or in an exhausted leave status.



The AHTD CENTERLINE

Published by and for employees of the Arkansas State Highway and Transportation Department as a medium of departmental news and other information. Correspondence and materials should be directed to the Public Affairs Office, 10324 Interstate 30, Room 1002, P.O. Box 2261, Little Rock, Arkansas 72203-2261, (501) 569-2227.

ARKANSAS STATE HIGHWAY COMMISSION

L.W. "BILL" CLARK, CHAIRMAN
BOBBY HOPPER, VICE CHAIRMAN
HERBY BRANSCUM, JR.
JOHN "M" LIPTON
J.W. "BUDDY" BENAFIELD

DAN FLOWERS
DIRECTOR OF
HIGHWAYS AND TRANSPORTATION

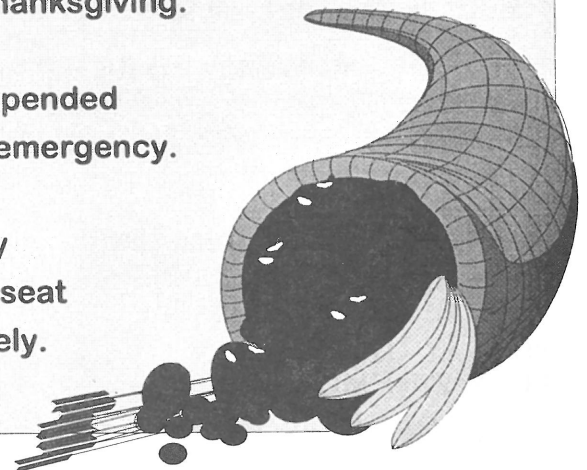
© 1996 - AHTD

Thanksgiving Holidays

Thursday and Friday, November 28 and 29
are state holidays for AHTD employees
in observance of Thanksgiving.

All work will be suspended
except in cases of emergency.

Have a safe holiday
and please, fasten seat
belts and drive safely.



AHTD PEOPLE



NEW EMPLOYEES

Human Resources

Bradley Marlone, General Laborer

Maintenance

Roger Mahan, Lowboy or Float Truck Driver; **William Reed**, **John McIntare**, Heavy Bridge Repairers I; **James Hayes**, Skill Trades Trainee

Planning & Research

James Camp, Electronics Technician

Programs & Contracts

Deborah Simpson, Office Administrative Assistant II

District 1

Dennis Scott, General Laborer; **Robert Chrisco**, **Eddie Simons**, Single Axle Truck Drivers

District 2

Saul King, **Richard Little**, **Freddie Wooten**, Single Axle Truck Drivers; **Jerome Boyd**, **David Felts**, **Lee Strange**, **Tim Hall**, General Laborers

District 3

Wayne McCoy, General Laborer; **Stephen Callicott**, Civil Engineer I

District 4

Darrell Harden, Mechanic; **Paul Forst**, Single Axle Truck Driver; **Danny Brown, Jr.**, Construction Helper I

District 5

Ruth Ferguson, General Laborer

District 6

Richard Collie, **Tom Waller**, **Jerry Cook**, **Roland Fox**, Single Axle Truck

Drivers; **Christopher Crank**, **James Jefferson**, **Charles Phillips**, General Laborers; **Doug Ramer**, Construction Helper I

District 7

Thomas Crain, General Laborer; **Joe Garza**, **George Moore**, Single Axle Truck Drivers

District 8

Randall Sommers, **Donnie Wallace**, **Janet James**, **Bryan-Beene**, **Mary Scott**, General Laborers; **Thomas Whorton**, Single Axle Truck Driver

District 10

Lubie Watson, General Laborer

PROMOTIONS

Computer Services

Walter King, Applications System Analyst I

Construction

Barry Young, Final Estimates Squad Leader

Programs and Contracts

Suzanne Squires, Accident Coding Clerk I

Roadway Design

Frank Bray, Jr., **Charles Martin**, **Marks Woods**, Senior Design Engineers

Surveys

Marilyn Huddleston, Office Administrative Assistant III

District 1

Opal Fitts, Resident Office Technician

District 2

Cathy Blasengame, **James Copeland**, Vegetation Controllers; **Brain Cranford**, **John Moorehead**, **Stanley Tripp**, Single Axle Truck Drivers

District 3

Charles Fritts, Senior Mechanic

District 4

James Copeland, Crew Leader; **Keith Corbin**, Multi-Axle Truck Driver; **John Grounds**, Adv. Construction Field Engineer; **Robert Robertson, Jr.**, Senior Inspector; **David Rose**, Distributor/Roller Operator

District 6

Linda Anderson, **Alice Edmonson**, Single Axle Truck Drivers; **Charles Howard**, Lead Person; **Marion Shepherd**, Street Sweeper Operator

District 7

Joey Leija, Construction Helper II

District 8

Glen Chavers, **Jimmy Daniel**, **Kenneth Jackson**, Single Axle Truck Drivers

District 9

Jerry Kasich, Roller Operator; **Stephen Lawrence**, Assistant Resident Engineer

District 10

Tammy Forbs, Single Axle Truck Driver; **James Wagster**, Asphalt Tank Truck Driver; **Fred Williams**, Lead Person

SERVICE

40 Years

Vernon McMahan, District 6 Senior Inspector

35 Years

Melvin House, District Materials Inspector

30 Years

Benny Robbins, Assistant Chief Engineer for Design Administrative Assistant I; **Jimmy Austin**, District 8 Inspector

25 Years

Calvin Lassiter, Maintenance Striping Crew Supervisor; **Jessie Meabon**, Planning & Research Highway Data Collector; **Johnny Sprayberry**, District 7 Senior Inspector

20 Years

Oretta McCoy, Construction Final Estimates Squad Leader; **Brenda Walden**, Construction Office Administrative Assistant V; **Odin Barker**, Equipment Specialist; **Reggie Cobb**, Materials Technician IV; **Roy Douglas**, Programs & Contracts Program Administration Coordinator; **Arther Huggins**, D-2 Hydraulic Excavator Operator/Finish; **James Carter**, D-4 Area Maintenance Supervisor; **Charles O'Neal**, D-6 Inspector; **Romasha Bridges**, D-6 Resident Office Technician; **Bernard Washington**, D-6 Senior Construction Materials Inspector; **David Jackson**, D-6 Inspector; **Glenn Creamer**, D-9 Senior Mechanic; **Gerald Teague**, D-9 Construction Engineer

15 Years

Billy Smith, AHP Corporal;

Michael Almeda, AHP Patrol Officer First Class; **Shelby Sledge**, AHP Corporal; **Jerry Booker**, AHP 2nd Lieutenant; **Benny Malone**, Maintenance Crew Leader; **Bert Porterfield**, Maintenance Assistant Sign Shop Supervisor; **Priscilla Winkler**, Right of Way Office Administrative Assistant I; **Marilyn Bates**, D-2 Area Headquarters Attendant; **Hershal Clover**, D-3 Lead Person; **Clifford Cline**, D-3 Single Axle Truck Driver; **Warren Kuhn**, D-6 Station Attendant; **Janet Davis**, D-8 Resident Office Technician; **Robert Wall**, D-8 Motor Patrol Operator/Finish; **Alma Cantrell**, D-9 Fuel Clerk

10 Years

James Stevens, **Robert Satterfield**, **Pamela Bruce**, AHP Patrol Officers First Class; **Wayne Hamilton**, D-1 Senior Mechanic; **William Copeland**, D-1 Parts Runner; **Brent Ramsey**, D-1 Inspector; **Joey Reep**, D-2 Senior Mechanic; **Cynthia Plunkett**, D-2 Fuel Clerk; **Johnny Bonds, Jr.**, D-5 Backhoe/Front End Loader Operator; **Young Mack IV**, D-5 Inspector; **Jeffrey Clark**, D-6 Single Axle Truck Driver; **Ray Chamberlain**, D-6 Inspector; **Charles Seftar**, D-9 Construction Aide II; **Darrel Watkins**, D-5 Construction Materials Inspector; **Tony Matthews**, D-10 Motor Patrol Operator

5 Years

Eric Chilton, Computers Programmer Analyst II; **Joyce Phillips**, Human Resources Employee Assistance Program Coordinator; **Mazen Muradvich**, Roadway Design Construction Estimates Engineer; **Cecil Coleman**, D-1 Vegetation Controller; **Earl Fleagle**, D-2 Civil Engineering Technician; **Terry Hosey**, D-3 Vegetation Controller; **Sydney Ratcliff**, D-3 Stock Clerk; **Gary Aldridge**, D-3 Single Axle Truck Driver; **Brian Imler**, **Jerry Brown**, D-3 Construction Aides I; **Paul Thornhill**, D-9 Backhoe/Front End Loader Operator; **Clifton Smith**, D-9 Hydraulic Excavator Operator/Finish; **Jerry Reeves**, D-10 Backhoe/Front End Loader Operator; **John Jarrett**, D-10 Senior Mechanic

RETIREMENTS

Don Potter, Roadway Design Staff Hydraulic Engineer, retired September 17 with 40 years service.

Benny Robbins, Assistant Chief Engineer for Design Administrative Assistant I, retired October 23 with 30 years service.

Albert Smith, Arkansas Highway Police First Lieutenant, retired October 4 with 30 years service.

